



CLAMPS & WORK HOLDING DEVICES

BASIC CLAMPING ELEMENTS.

TOP CLAMPING SYSTEMS.

CLAMP SUPPORT SYSTEMS

SIDE CLAMPING SYSTEMS.

QUICK ACTING CLAMPING SYSTEMS.

CNC TURNING CENTER ACCESSORIES

INJECTION MOULD MACHINE CLAMPING SYSTEMS.



INDUSTRIAL TOOLS & HARDWARE

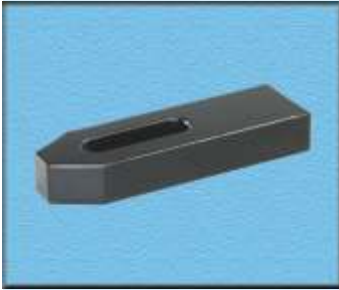
Group- II : Top clamping systems.

- Strap clamp.
- Step strap clamp.
- Heel strap clamp.
- U- Clamp.
- Hold down clamp.

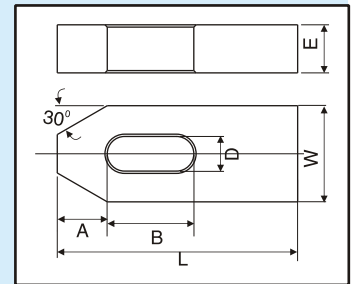


Strap clamp IS 4292-1984/ DIN 6314

Heat-treated steel, Blackodised



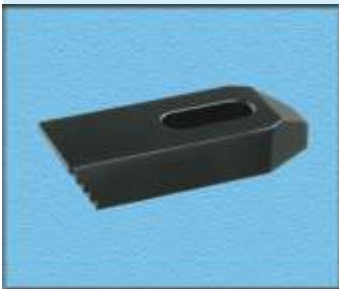
Item code	D	L	W	E	A	B	gm
aec1201.080	9	60	25	12	13	22	110
aec1201.100	11	80	30	15	15	30	220
aec1201.120	14	100	40	20	21	40	490
aec1201.121	14	125	40	20	21	50	600
aec1201.160	18	125	50	25	26	45	1000
aec1201.161	18	160	50	25	26	65	1270
aec1201.200	22	160	60	30	30	60	1830
aec1201.201	22	200	60	30	30	80	2290
aec1201.240	26	200	70	30	35	80	2650
aec1201.241	26	250	70	35	35	105	3320
aec1201.300	34	250	80	40	45	100	5000
aec1201.301	34	315	80	50	45	130	7800



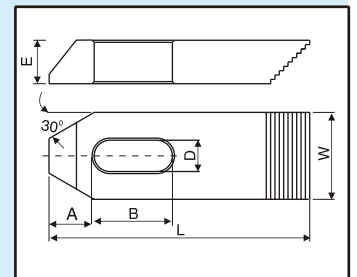
Step strap clamp

Heat-treated steel, Blackodised.

For use in combination with step block.



Item code	D	L	W	E	A	B	gm
aec1202.080	9	60	25	12	13	22	100
aec1202.100	11	80	30	15	15	30	200
aec1202.120	14	100	40	20	21	40	450
aec1202.160	18	125	50	25	26	45	900
aec1202.200	22	160	60	30	30	60	1700
aec1202.240	26	200	70	30	35	80	2500

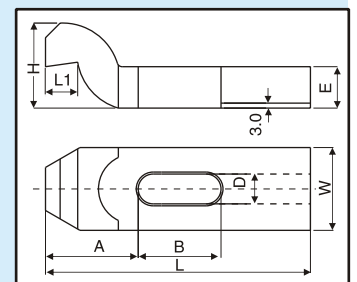


Heel strap clamp IS4893-1984/DIN 6316 -1980

S.G iron cast machining, paint finish.

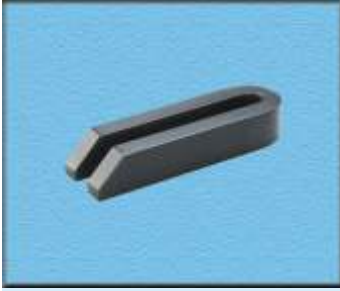


Item code	D	L	W	E	H	L1	A	B	gm
aec1203.080	9	80	25	12	25	9	25	25	160
aec1203.100	11	100	30	15	30	12	32	32	300
aec1203.120	14	125	40	20	40	16	40	40	680
aec1203.160	18	160	50	25	50	20	49	49	1400
aec1203.200	22	200	60	30	60	24	55	55	2500
aec1203.240	26	250	70	40	70	28	72	72	4300

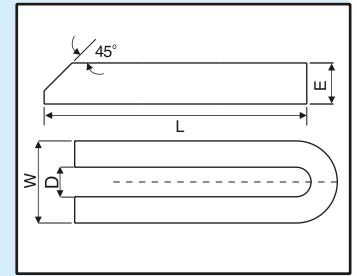


U-clamp IS 4293-1984

Heat-treated steel, Blackodised



Item code	D	L	W	E	gm
aec1204.080	9	80	25	15	140
aec1204.100	11	100	31	20	300
aec1204.120	14	125	38	25	570
aec1204.121	14	160	38	25	730
aec1204.122	14	200	38	25	910
aec1204.160	18	160	48	30	1080
aec1204.161	18	200	48	30	1360
aec1204.162	18	250	48	30	1700
aec1204.200	22	200	62	40	1800
aec1204.201	22	250	62	40	3000
aec1204.202	22	315	62	40	3850
aec1204.240	26	200	66	40	2400
aec1204.241	26	250	66	40	3000
aec1204.242	26	315	66	40	3850
aec1204.300	34	250	74	50	3700
aec1204.301	34	315	74	50	4750
aec1204.302	34	400	74	50	6100



Hold down clamp.

S.G iron cast machined, paint finish. Time saving by self-positioning.

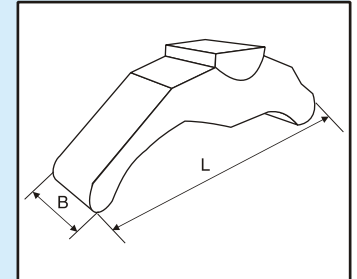


Special Features :

- Saddle locked on to the body.
- Self-positioning
- Hassle free height adjustment.
- Same clamping force exerted on work piece every time.

Applications :

- To hold press tools, moulds etc.
- Suitable for heavy duty & medium duty machining operations on milling, drilling machines.



Item code	L	B	D	Range.	Force (kgs.)	gm
aec1205.100	95	30	M10	0-30	800	330
aec1205.120	168	50	M12	0-60	1200	1400
aec1205.160	180	50	M16	0-80	2000	1825
aec1205.200	230	55	M20	0-110	2500	3100
aec1205.240	273	80	M24	0-140	3000	5800

* All dimensions are in mm unless otherwise specified.

* Due to constant development & enhancement in designs, dimensions given in catalogue may change without prior notice.

INDUSTRIAL TOOLS & HARDWARE

OFFICE : PLOT NO.2 DHANALAXMI HSG. SOC. ANANDNAGAR, HINGANE (KH)PUNE 411 051
 TELFAX : 24352114, PHONE : 65221812, 64701793 E-mail:- ith_clampings@vsnl.net