



CLAMPS & WORK HOLDING DEVICES

BASIC CLAMPING ELEMENTS.

TOP CLAMPING SYSTEMS.

CLAMP SUPPORT SYSTEMS

SIDE CLAMPING SYSTEMS.

QUICK ACTING CLAMPING SYSTEMS.

CNC TURNING CENTER ACCESSORIES

INJECTION MOULD MACHINE CLAMPING SYSTEMS.



INDUSTRIAL TOOLS & HARDWARE

Group -VII: Injection Mould machine clamping systems.



- Strap clamp with support tapping.
- Flanged Studs with long body end.
- Clamp rear Support.
- Plain washer standard.
- Plain washer Thick.
- U- Clamp washer.
- Hex nut.
- Collar nut.
- Heel Strap clamp with heel rest.
- Step Block

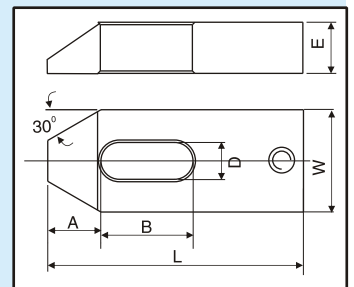
Mould Strap clamp with tapped hole

Hardened steel, Blackodised.



Rear tapping hole for support aec1510 for height adjustment. Suitable for use on injection mould & press tool clamping. Front taper provided for ease in side pocket clamping.

Item code	D	L	W	E	A	B	E1	d	gm
aec1701.121	14	125	40	20	21	70	12	12	550
aec1701.161	18	160	50	25	26	85	16	16	1200
aec1701.201	22	200	60	30	30	95	20	20	2200
aec1701.240	26	200	70	30	35	95	24	24	2600
aec1701.241	26	250	70	35	35	125	24	24	3200

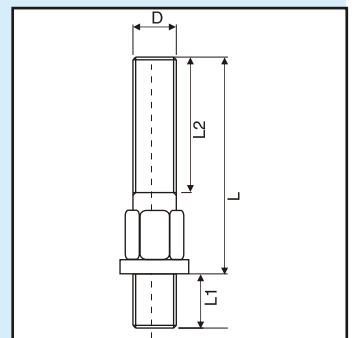


Flanged stud with Hex for spanner.

(Plastic Moulding application)



We recommend forged flange studs on platen type machines to prevent platen thread damage over allen bolts. studs are fully engaged to platen first to the designed length and then subjected to clamping load. Hence any damages to platen threads are avoided. Which is not the case with allen bolts. Further allen bolt length engagement varies with mould height, hence it can be hazardous to the safety as well as to platen threads if the engagement is less than desired.



Item Code	'D'	'L'	'L1'	'L2'	gm
aec1702.120	12	80	30	60	150
aec1702.121	12	110	30	80	175
aec1702.160	16	100	35	65	180
aec1702.161	16	140	35	90	210
aec1702.162	16	160	35	110	250
aec1702.200	20	130	40	75	475
aec1702.201	20	175	40	90	510
aec1702.202	20	225	40	110	540
aec1702.240	24	150	40	90	650
aec1702.241	24	200	40	110	800
aec1702.242	24	250	40	125	900

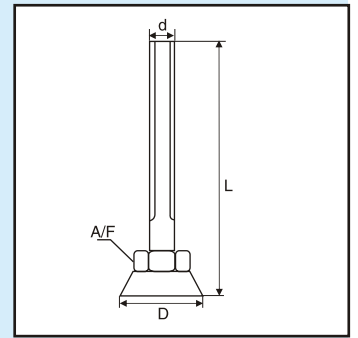
Support Bolt

Forged steel, heat treated, blackened.



For fast & easy height adjustment.
Provided with hex & round base & lock nut.

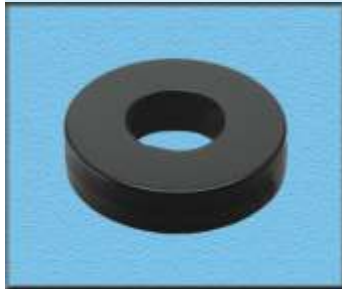
Item code	d	D	L	A/F	gm
aec1703.120	12	35	65	19	100
aec1703.121	12	35	100	19	140
aec1703.160	16	35	75	19	150
aec1703.161	16	35	110	19	175
aec1703.200	20	48	85	27	310
aec1703.201	20	48	110	27	350
aec1703.240	24	48	95	27	500
aec1703.241	24	48	130	27	550



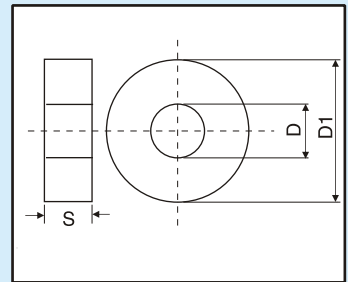
Plain washer - thick

S.G iron, paint finish

Thick washers for heavy use.



Item code	D	D1	S	gm
aec1704.120	12.5	40	10	90
aec1704.160	16.5	40	10	85
aec1704.200	20.5	40	10	80
aec1704.240	24.5	40	10	75



FOR OTHER ACCESSORIES IN MOULD CLAMPING SYSTEMS AND ALSO FOR DIFFERENT CLAMP VERSIONS, PLEASE REFER FOLLOWING GROUPS AND USE CORRESPONDING ORDERING CODES. FOR EXAMPLE REAR SUPPORT ON CLAMP PLEASE REFER **GROUP - III : CLAMP SUPPORT SYSTEMS**

FOR VARIOUS CLAMPS REFER **GROUP - II : TOP CLAMPING SYSTEMS**

ALSO REFER **GROUP - I : BASIC CLAMPING ELEMENTS**



* All dimensions are in mm unless otherwise specified.

* Due to constant development & enhancement in designs, dimensions given in catalogue may change without prior notice.

INDUSTRIAL TOOLS & HARDWARE

OFFICE : PLOT NO.2 DHANALAXMI HSG. SOC. ANANDNAGAR, HINGANE (KH)PUNE 411 051
TELFAX : 24352114, PHONE : 65221812, 64701793 E-mail:- ith_clampings@vsnl.net