



CLAMPS & WORK HOLDING DEVICES

BASIC CLAMPING ELEMENTS.

TOP CLAMPING SYSTEMS.

CLAMP SUPPORT SYSTEMS

SIDE CLAMPING SYSTEMS.

QUICK ACTING CLAMPING SYSTEMS.

CNC TURNING CENTER ACCESSORIES

INJECTION MOULD MACHINE CLAMPING SYSTEMS.



INDUSTRIAL TOOLS & HARDWARE

Group - I : Basic clamping elements.



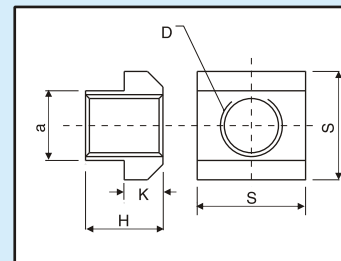
- T-nut.
- Stud
- T-bolt.
- Hex nut
- Extension Nut
- Collar nut
- Clamping washer
- C-washer
- Hinge washer erical
- Spherical washer with conical seat.

T-nut. 1S 2015-1977

Hardened steel, Blackodised



Item code.	size	a	D	H	K	S	gm
aec1101.080	8	7.6	M6	10	6	13	10
aec1101.100	10	9.6	M 8	12	6	15	15
aec1101.101	10	9.6	M6	12	6	15	16
aec1101.120	12	11.6	M10	14	7	18	25
aec1101.121	12	11.6	M8	14	7	18	27
aec1101.140	14	13.6	M12	16	8	22	35
aec1101.141	14	13.6	M10	16	8	22	38
aec1101.160	16	15.6	M12	18	9	25	55
aec1101.161	16	15.6	M10	18	9	25	58
aec1101.180	18	17.6	M16	20	10	28	70
aec1101.181	18	17.6	M10	20	10	28	75
aec1101.182	18	17.6	M12	20	10	28	75
aec1101.200	20	19.6	M16	24	12	32	107
aec1101.201	20	19.6	M12	24	12	32	115
aec1101.220	22	21.6	M20	28	14	35	165
aec1101.221	22	21.6	M16	28	14	35	175
aec1101.240	24	23.6	M20	32	16	40	220
aec1101.280	28	27.6	M24	36	18	44	310
aec1101.281	28	27.6	M16	36	18	44	325
aec1101.282	28	27.6	M20	36	18	44	320
aec1101.360	36	35.6	M30	44	22	54	590

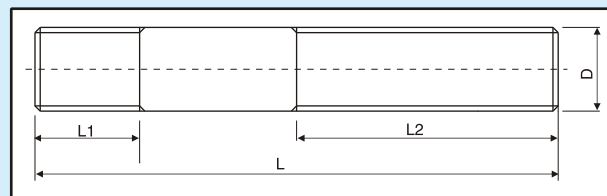


We also make :

- T nuts in stainless steel
- Blank T nuts (Semi finished, without Tapping)
- Special dimension Tnuts
- CNC Chuck T nuts

Clamping Stud IS 1862-1967

Hardened & tempered Steel, Blackodised



Item Code	'D'	'L'	'L1'	'L2'	gm
aec1103.081	M8	40	11	20	10
aec1103.082	M8	50	11	25	15
aec1103.083	M8	63	11	40	20
aec1103.084	M8	80	11	50	25
aec1103.085	M8	100	11	63	30
aec1103.086	M8	125	11	75	40
aec1103.087	M8	160	11	100	50
aec1103.088	M8	200	11	125	60

aec1103.101	M10	50	13	25	20
aec1103.102	M10	80	13	50	40
aec1103.103	M10	100	13	63	50
aec1103.104	M10	125	13	75	65
aec1103.105	M10	160	13	100	80
aec1103.106	M10	200	13	125	100

aec1103.121	M12	50	15	25	35
aec1103.122	M12	63	15	32	50
aec1103.123	M12	80	15	50	60
aec1103.124	M12	100	15	63	70
aec1103.125	M12	125	15	75	90
aec1103.126	M12	160	15	100	115
aec1103.127	M12	200	15	125	140
aec1103.128	M12	250	15	160	175

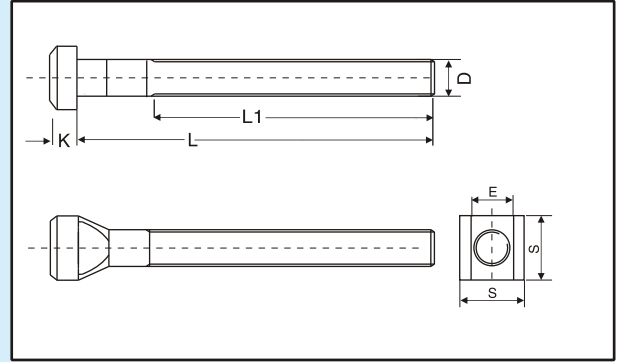
Item Code	'D'	'L'	'L1'	'L2'	gm
aec1103.161	M16	63	19	32	85
aec1103.162	M16	80	19	50	105
aec1103.163	M16	100	19	63	130
aec1103.164	M16	125	19	75	160
aec1103.165	M16	160	19	100	210
aec1103.166	M16	200	19	125	260
aec1103.167	M16	250	19	160	325
aec1103.168	M16	315	19	180	415
aec1103.169	M16	350	19	200	460

aec1103.201	M20	80	27	32	160
aec1103.202	M20	125	27	70	55
aec1103.203	M20	160	27	100	325
aec1103.204	M20	200	27	125	410
aec1103.205	M20	250	27	160	510
aec1103.206	M20	315	27	180	640
aec1103.207	M20	400	27	250	800

aec1103.241	M24	100	35	45	290
aec1103.242	M24	125	35	63	365
aec1103.243	M24	160	35	100	470
aec1103.244	M24	200	35	120	580
aec1103.245	M24	250	35	160	730
aec1103.246	M24	315	35	200	900
aec1103.247	M24	400	35	250	1160
aec1103.248	M24	500	35	315	1450

Forged 'T' bolt IS2014-1977

Forged Head, Hardened & tempered Steel Blackodised



Item code	D	T-slot	L	L1	E	S	K	gm
aec1102.101	M10	10	40	30	9.6	15	6	35
aec1102.102	M10	10	65	45	9.6	15	6	50
aec1102.103	M10	10	80	55	9.6	15	6	60
aec1102.104	M10	10	100	60	9.6	15	6	70
aec1102.105	M10	10	125	80	9.6	15	6	90

aec1102.121	M12	12	50	35	11.6	18	7	60
aec1102.122	M12	12	63	45	11.6	18	7	65
aec1102.123	M12	12	80	55	11.6	18	7	70
aec1102.124	M12	12	100	65	11.6	18	7	90
aec1102.125	M12	12	125	75	11.6	18	7	110
aec1102.126	M12	12	160	100	11.6	18	7	140
aec1102.127	M12	12	200	120	11.6	18	7	160
aec1102.128	M12	12	250	150	11.6	18	7	180

aec1102.141	M12	14	50	35	13.6	22	8	70
aec1102.142	M12	14	63	45	13.6	22	8	85
aec1102.143	M12	14	80	55	13.6	22	8	100
aec1102.144	M12	14	100	65	13.6	22	8	110
aec1102.145	M12	14	125	75	13.6	22	8	120
aec1102.146	M12	14	160	100	13.6	22	8	150
aec1102.147	M12	14	200	120	13.6	22	8	180
aec1102.148	M12	14	250	150	13.6	22	8	210

aec1102.161	M16	16	65	45	15.6	25	9	140
aec1102.162	M16	16	80	55	15.6	25	9	160
aec1102.163	M16	16	100	65	15.6	25	9	180
aec1102.164	M16	16	125	75	15.6	25	9	240
aec1102.165	M16	16	160	100	15.6	25	9	270
aec1102.166	M16	16	200	120	15.6	25	9	350
aec1102.167	M16	16	250	150	15.6	25	9	400
aec1102.168	M16	16	315	200	15.6	25	9	500

aec1102.181	M16	18	65	45	17.6	28	10	160
aec1102.182	M16	18	80	55	17.6	28	10	190
aec1102.183	M16	18	100	65	17.6	28	10	220
aec1102.184	M16	18	125	75	17.6	28	10	260
aec1102.185	M16	18	160	100	17.6	28	10	290
aec1102.186	M16	18	200	120	17.6	28	10	380
aec1102.187	M16	18	250	150	17.6	28	10	430
aec1102.188	M16	18	315	200	17.6	28	10	530

Item code	D	T-slot	L	L1	E	S	K	gm
aec1102.201	M20	20	80	55	19.6	32	12	290
aec1102.202	M20	20	100	65	19.6	32	12	340
aec1102.203	M20	20	125	75	19.6	32	12	390
aec1102.204	M20	20	160	100	19.6	32	12	470
aec1102.205	M20	20	200	120	19.6	32	12	550
aec1102.206	M20	20	250	150	19.6	32	12	680
aec1102.207	M20	20	315	200	19.6	32	12	800
aec1102.208	M20	20	400	250	19.6	32	12	1000

aec1102.221	M20	22	80	55	21.6	35	14	330
aec1102.222	M20	22	100	65	21.6	35	14	380
aec1102.223	M20	22	125	75	21.6	35	14	440
aec1102.224	M20	22	160	100	21.6	35	14	500
aec1102.225	M20	22	200	120	21.6	35	14	570
aec1102.226	M20	22	250	150	21.6	35	14	670
aec1102.227	M20	22	315	200	21.6	35	14	820
aec1102.228	M20	22	400	250	21.6	35	14	1020

aec1102.241	M24	24	100	65	23.6	40	16	540
aec1102.242	M24	24	125	75	23.6	40	16	620
aec1102.243	M24	24	160	100	23.6	40	16	770
aec1102.244	M24	24	200	120	23.6	40	16	880
aec1102.245	M24	24	250	150	23.6	40	16	1050
aec1102.246	M24	24	315	200	23.6	40	16	1250
aec1102.247	M24	24	400	250	23.6	40	16	1400

aec1102.281	M24	28	100	65	27.6	44	18	620
aec1102.282	M24	28	125	75	27.6	44	18	710
aec1102.283	M24	28	160	100	27.6	44	18	850
aec1102.284	M24	28	200	125	27.6	44	18	930
aec1102.285	M24	28	250	160	27.6	44	18	1120
aec1102.286	M24	28	315	200	27.6	44	18	1300
aec1102.287	M24	28	400	250	27.6	44	18	1450

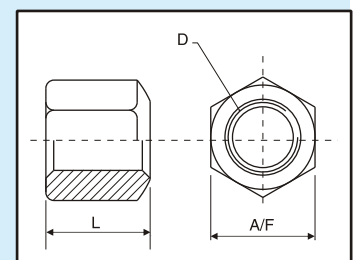
aec1102.301	M30	36	125	80	35.5	54	22	1250
aec1102.302	M30	36	160	100	35.5	54	22	1430
aec1102.303	M30	36	200	120	35.5	54	22	1620
aec1102.304	M30	36	250	150	35.5	54	22	1950
aec1102.305	M30	36	315	200	35.5	54	22	2300

Clamping Nut DIN 6330-1965

Hardened & Tempered drawn steel , blackodised



Item code	D	L	A/F	gm
aec1104.080	M8	12	13	7
aec1104.100	M10	15	17	15
aec1104.120	M12	18	19	20
aec1104.160	M16	24	24	50
aec1104.200	M20	30	30	110
aec1104.240	M24	36	36	190
aec1104.300	M30	46	45	400

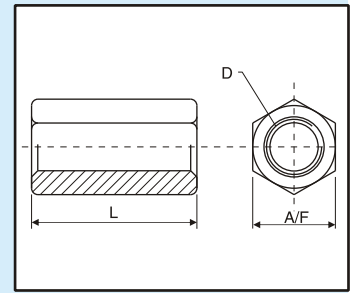


Extension Nut

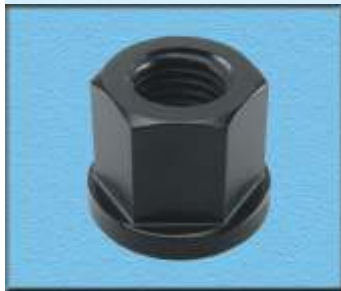
Hardened & Tempered drawn steel , blackodised



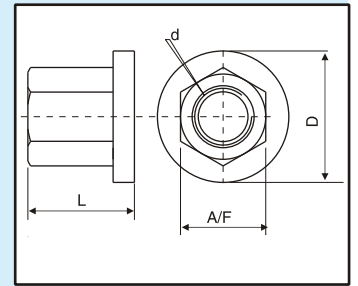
Item code	D	L	A/F	gm
aec1105.080	M8	24	13	19
aec1105.100	M10	30	17	40
aec1105.120	M12	36	19	64
aec1105.160	M16	48	24	120
aec1105.200	M20	60	30	240
aec1105.240	M24	72	36	400
aec1105.300	M30	90	45	850



Collar Nut DIN 6331/ IS 7795-1991

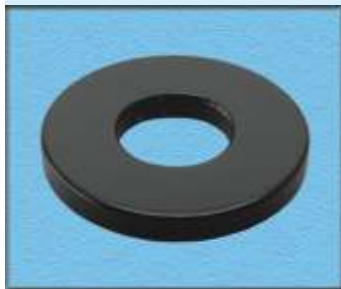


Item code	d	D	L	A/F	gm
aec1106.080	M8	18	12	12	12
aec1106.100	M10	22	15	17	25
aec1106.120	M12	25	18	19	35
aec1106.160	M16	31	24	24	68
aec1106.200	M20	37	30	30	130
aec1106.240	M24	45	36	36	230

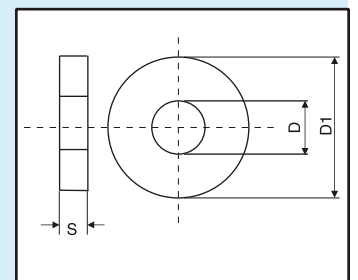


Plain Washer DIN 6340 -1962

Heat treated steel



Item code	D	D1	S	gm
aec1107.080	8.5	23	4	10
aec1107.100	10.5	28	4	12
aec1107.120	13.0	35	5	35
aec1107.160	17.0	45	6	60
aec1107.200	21.0	50	6	78
aec1107.240	25.0	60	8	171
aec1107.300	31.0	68	10	230

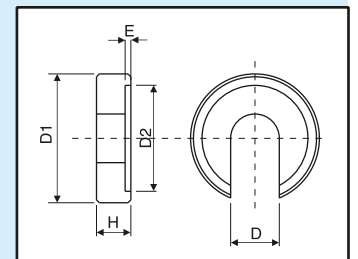


C-Washer DIN 6372 - 1972/IS 4291-1996

Heat treated steel, blackodised :



Item code.	D	D1	D2	E	H	gm
aec1108.080	8.5	28	21	1	7	22
aec1108.100	10.5	34	25	1.2	8	40
aec1108.120	13.0	40	30	1.8	9	58
aec1108.160	17.0	56	37	1.8	12	165
aec1108.200	21.0	64	45	2.0	14	230
aec1108.240	25.0	75	52	2.0	16	320
aec1108.300	31.0	90	65	2.0	18	720

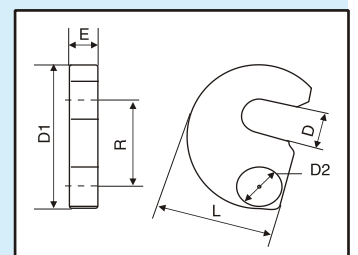


Hinge Washer DIN 6371-1972

Heat treated steel, blackodised :

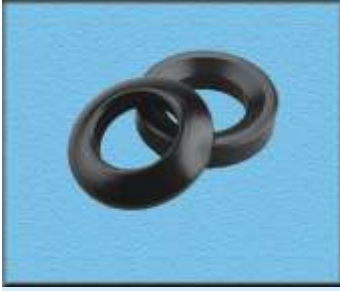


Item code	D	D1	D2	E	L	R	gm
aec1110.080	9.5	43	9.0	9.8	32.5	21.6	76
aec1110.100	11.5	48	9.0	9.8	36.5	23.6	90
aec1110.120	13.5	61	11.0	11.8	45.0	29.6	180
aec1110.160	17.5	68	11.0	11.8	50.0	33.6	210
aec1110.200	21.5	74	11.0	11.8	55.0	36.6	230
aec1110.240	25.5	82	11.0	15.8	62.0	40.6	425
aec1110.300	32.0	97	11.0	15.8	73.0	49.0	560

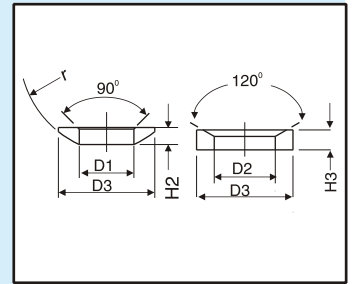


Spherical washer & Conical Seat DIN 6319/IS 4297-1996

Heat treated steel, blackodised



Item code	D1	D2	D3	H2	H3	gm
aec1109.080	8.4	9.6	17.0	3.2	3.5	6
aec1109.100	10.5	12.0	21.0	4.0	4.2	13
aec1109.120	13.0	14.2	24.0	4.6	5.0	18
aec1109.160	17.0	19.0	30.0	5.3	6.2	31
aec1109.200	21.0	23.2	36.0	6.3	7.5	53
aec1109.240	25.0	28.0	44.0	8.2	9.5	104
aec1109.300	31.0	35.0	56.0	11.2	12.0	230



* All dimensions are in mm unless otherwise specified.

* Due to constant development & enhancement in designs, dimensions given in catalogue may change without prior notice.

INDUSTRIAL TOOLS & HARDWARE

OFFICE : PLOT NO.2 DHANALAXMI HSG. SOC. ANANDNAGAR, HINGANE (KH)PUNE 411 051
TELFAX : 24352114, PHONE : 65221812, 64701793 E-mail:- ith_clampings@vsnl.net