



CLAMPS & WORK HOLDING DEVICES

BASIC CLAMPING ELEMENTS.

TOP CLAMPING SYSTEMS.

CLAMP SUPPORT SYSTEMS

SIDE CLAMPING SYSTEMS.

QUICK ACTING CLAMPING SYSTEMS.

CNC TURNING CENTER ACCESSORIES

INJECTION MOULD MACHINE CLAMPING SYSTEMS.



INDUSTRIAL TOOLS & HARDWARE

Group - VI : CNC TURNING CENTER ACCESSORIES



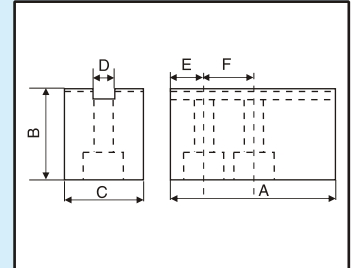
- CNC Soft Jaws
- CNC T Nuts
- CNC Turret Sleeves

CNC Soft Jaw set



Item code	A	B	C	D	E	F	d	SERRATIONS
aec1601.001	48	25	20	8	8	15	M6	1.5x60°
aec1601.002	57	26	26	10	14	14	M8	1.5x60°
aec1601.003	80	38	35	17	17	19	M12	1/16"x90°
aec1601.004	120	48	45	21	25	25	M16	1/16"x90°
aec1601.005	155	65	60	25.5	40	40	M20	3/32"x90°
aec1601.006	180	70	64	25	40	40	M20	3.0x60°

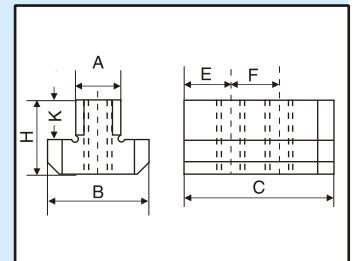
- Large & Long Series Jaws as well as jaws to suit different manufactured chucks also available on request.



CNC T - Nut



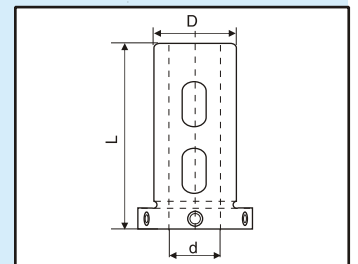
Item code	d	A	B	C	H	K	E	F
aec1602.001	M8	10.0	14	26	12	8	6	14
aec1602.002	M10	12.0	17	42	22	15	11.5	19
aec1602.003	M12	17.0	24	42	21	14	11.5	19
aec1602.004	M16	21.0	29.5	48	24.5	14.5	11.5	25



CNC LATHE TURRET SLEEVE (ST. BORE)



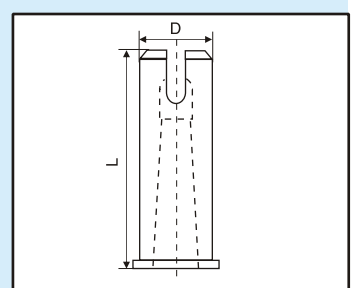
Item code	DØg6	d Ø H7	L
aec1603.0-d	20	8,10,12	50
aec1603.1-d	25	8,10,12,16	60
aec1603.2-d	32	8,10,12,16,20,25	70
aec1603.3-d	40	8,10,12,16,20,25,32	85
aec1603.4-d	50	10,12,16,20,25,32	95



CNC LATHE TURRET SLEEVE OPEN SLOT (MT. BORE) : IS 11949-1987

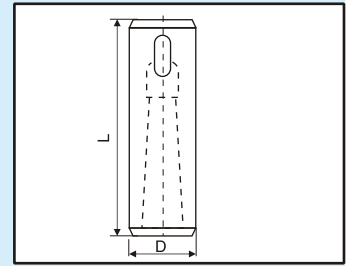


Item code	DØg6	ID TAPER X L
aec1604.1MT	20	MT1X70, MT2X90
aec1604.2MT	25	MT1X70, MT2X80
aec1604.3MT	32	MTIX70, MT2X80, MT3X100
aec1604.4MT	40	MTIX70, MT2X80, MT3X100, MT4X125
aec1604.5MT	50	MTIX70, MT2X80, MT3X100





Item code	DØg6	ID TAPER X L
aec1605.1MT	19.05	MT1X76, MT2X90
aec1605.2MT	25.4	MT1X90, MT2X95, MT3X115
aec1605.3MT	38.1	MTIX90, MT2X95, MT3X115, MT4X135
aec1605.4MT	44.45	MTIX90, MT2X95, MT3X115, MT4X135
aec1605.5MT	50.8	MTIX90, MT2X95, MT3X115, MT4X135
aec1605.6MT	54.0	MT2X95, MT3X115, MT4X135, MT5X175



* All dimensions are in mm unless otherwise specified.

* Due to constant development & enhancement in designs, dimensions given in catalogue may change without prior notice.

INDUSTRIAL TOOLS & HARDWARE

OFFICE : PLOT NO.2 DHANALAXMI HSG. SOC. ANANDNAGAR, HINGANE (KH)PUNE 411 051
 TELFAX : 24352114, PHONE : 65221812, 64701793 E-mail:- ith_clampings@vsnl.net